

# THE MEDIEVAL BRAY PROJECT

David McIlreavy MA MA MIAI  
Project Director

Our Wicklow Heritage: Community Archaeology  
Brockagh Resource Centre, Laragh  
27th May 2017

# OVERVIEW

Founded in 2015, The Medieval Bray Project is a community research initiative based in Bray, Co. Wicklow.

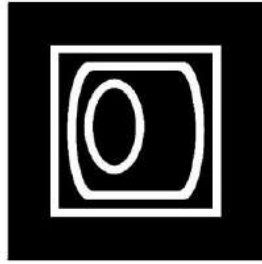
Current membership consists of 50 individuals, with a working group of 10 individuals directing research, fieldwork and dissemination

[www.themedievalbrayproject.ie](http://www.themedievalbrayproject.ie)

[www.facebook.com/themedievalbrayproject](https://www.facebook.com/themedievalbrayproject)



THE  
MEDIEVAL  
BRAY  
PROJECT



**Group  
for the Study  
of  
Irish Historic Settlement**



Conascadh na gCumann Staire  
Aitiúla  
Federation of Local History  
Societies



**THE  
MEDIEVAL  
BRAY  
PROJECT**

# SUPPORTED BY



An Chomhairle Oidhreachta  
The Heritage Council

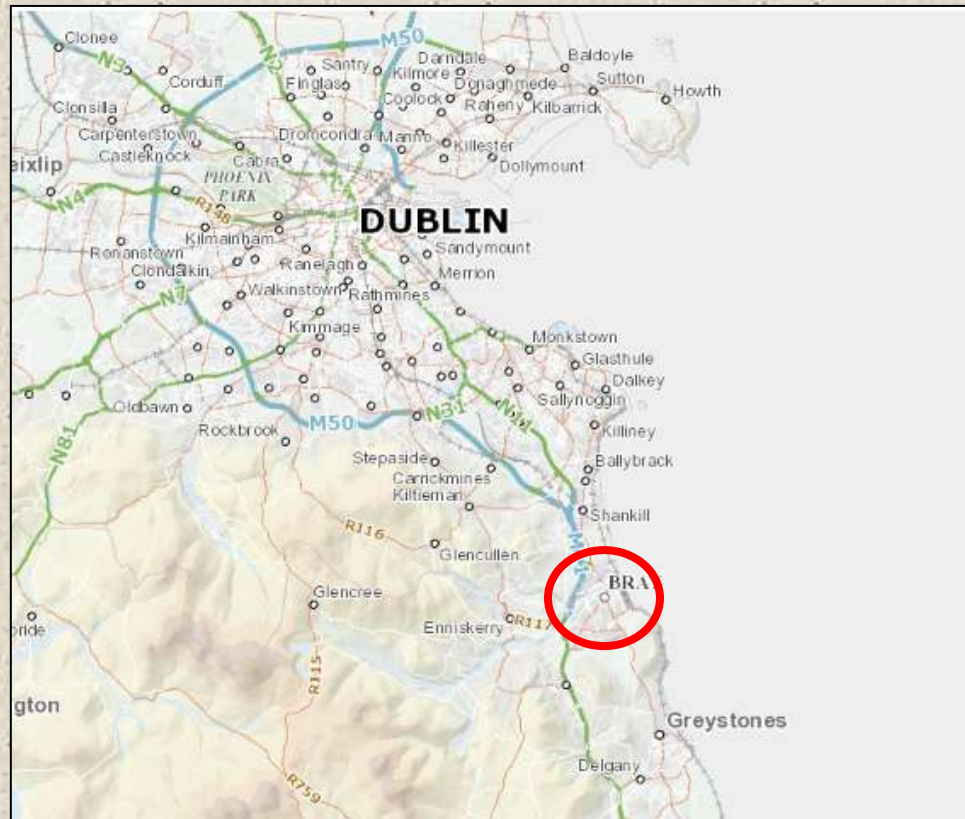


 County Wicklow  
Heritage Plan



THE  
MEDIEVAL  
BRAY  
PROJECT

# RESEARCH FOCUS



THE  
MEDIEVAL  
BRAY  
PROJECT

# ORIGINS

- Influenced by membership of community archaeological projects such as **Grassroots Archaeology** and **Resurrecting Monuments** and my own research into the medieval development of Bray
- The realisation that elements of this resource such as Oldcourt Castle, without further research and dissemination, face real dangers to future preservation



Tony Brierton Oldcourt Castle, Bray, Co. Wicklow



THE  
MEDIEVAL  
BRAY  
PROJECT

# RESEARCH 2016-2017

## Before De Ridelesford:

Mapping The Proto Manor Of Bre  
AD 1171 - 1173



Preliminary results of the first research avenue were presented at the Rathmichael Historical Society 42<sup>nd</sup> Summer Series Lecturers in 2016

And our latest presentations formed part of the 2017 Conference of the Institute of Archaeologists of Ireland



THE  
MEDIEVAL  
BRAY  
PROJECT

# THE RESEARCH AT RAHEEN A CLUIG



But the question as to what practically be done by community groups on the ground?

The group focussed early on the site of Raheen a Cluig, a medieval ecclesiastical site on the lower NE facing slopes of Bray Head.



THE  
MEDIEVAL  
BRAY  
PROJECT



# THE RESEARCH AT RAHEEN A CLUIG



THE  
MEDIEVAL  
BRAY  
PROJECT

# THE RESEARCH AT RAHEEN A CLUIG



[www.myireland.ie](http://www.myireland.ie) with Val Byrne



THE  
MEDIEVAL  
BRAY  
PROJECT

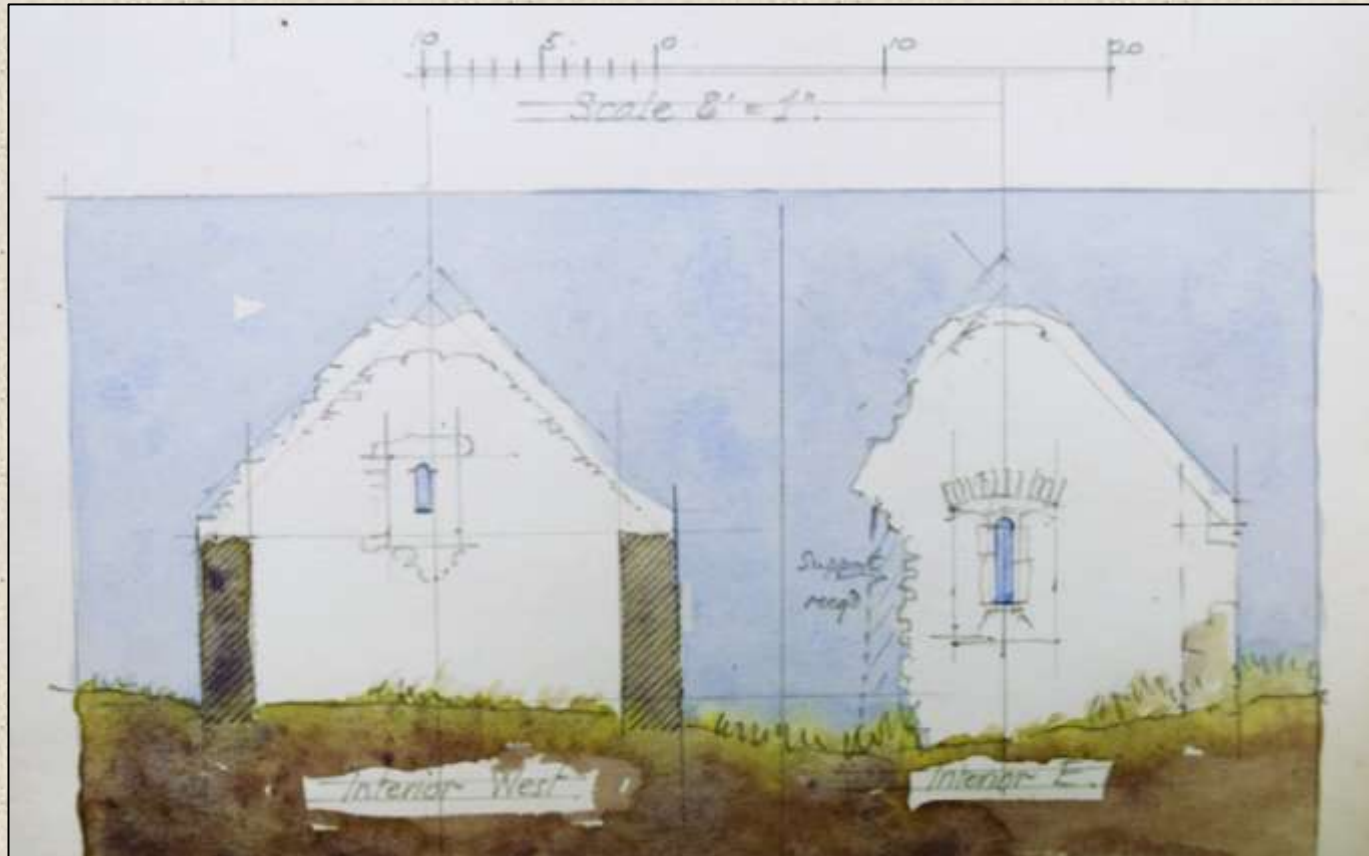
# THE RESEARCH AT RAHEEN A CLUIG

Consultation of the Sites and Monuments Record by members of the group uncovered the extent to which the remains had been reconstructed by the OPW.



THE  
MEDIEVAL  
BRAY  
PROJECT

# THE RESEARCH AT RAHEEN A CLUIG



THE  
MEDIEVAL  
BRAY  
PROJECT

# THE RESEARCH AT RAHEEN A CLUIG

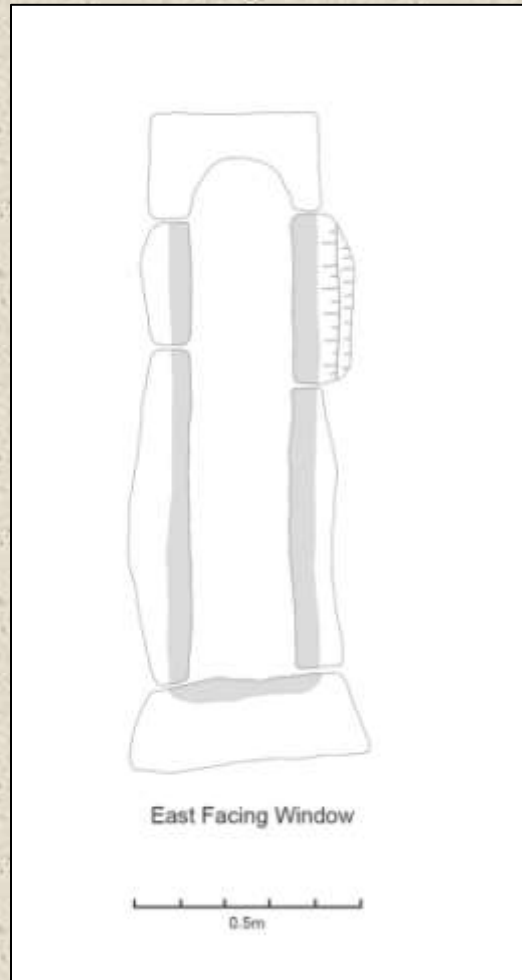


Over the course of two weekends in January 2017, a survey of stonework provided the beginnings of a visual guide to the architectural features of the building.



THE  
MEDIEVAL  
BRAY  
PROJECT

# THE RESEARCH AT RAHEEN A CLUIG



THE  
MEDIEVAL  
BRAY  
PROJECT

# THE RESEARCH AT RAHEEN A CLUIG

In conjunction with the previous survey, it was decided to investigate the mention of a “rectangular area of rubble and mortar...immediately E of the church” mentioned in the SMR information.

Further research revealed that Eugene O’Curry had noted the sites of, “...two smaller buildings, close together... near it on the east side with a nearly choked trench running north and south between them and the church. The whole appears to have been enclosed by a moate, parts of which remain on the east and north east” (27<sup>th</sup> Dec 1838, OS Survey Letters, Co. Wicklow)



THE  
MEDIEVAL  
BRAY  
PROJECT

# THE RESEARCH AT RAHEEN A CLUIG



THE  
MEDIEVAL  
BRAY  
PROJECT



# THE RESEARCH AT RAHEEN A CLUIG



On the 19<sup>th</sup> March 2017, after 5 weekends of volunteer surveying under the direction of Susan Curran, (doctoral candidate at UCD studying the identification of early medieval settlement patterns using remote sensing techniques) and over 12500 sq metres....



THE  
MEDIEVAL  
BRAY  
PROJECT

# THE RESEARCH AT RAHEEN A CLUIG

## Geophysical Survey Report

Site: *Newcourt, Raithín a'Chluig*

RMP: WI008-004, WI008-004001

ITM: 727592, 717629

Licence: 17R0017



Report Author: Susan Curran M.A.  
PhD Researcher, University College Dublin

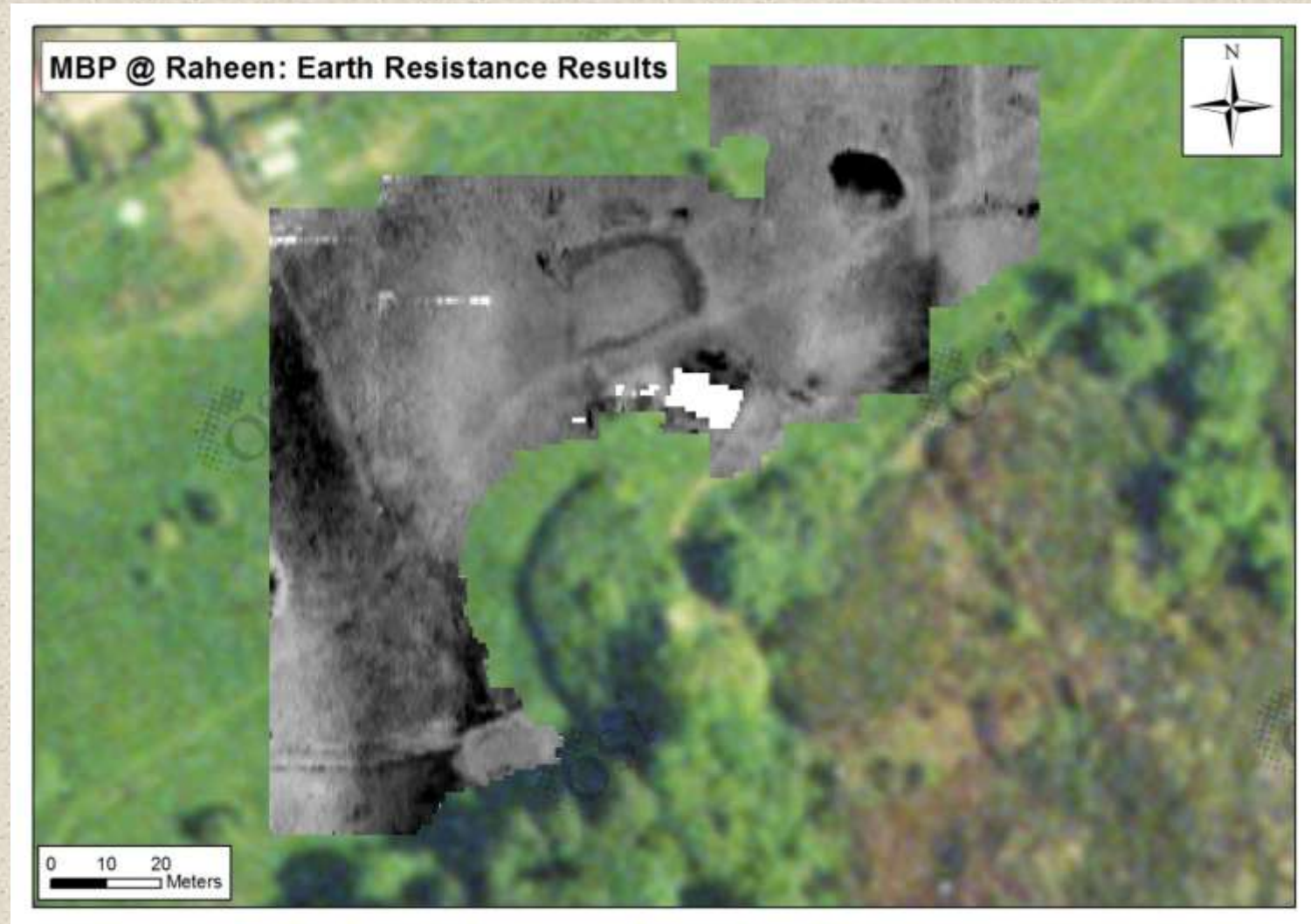
[scurran28@gmail.com](mailto:scurran28@gmail.com) / [susan.curran@ucdconnect.ie](mailto:susan.curran@ucdconnect.ie)

086 840 4472

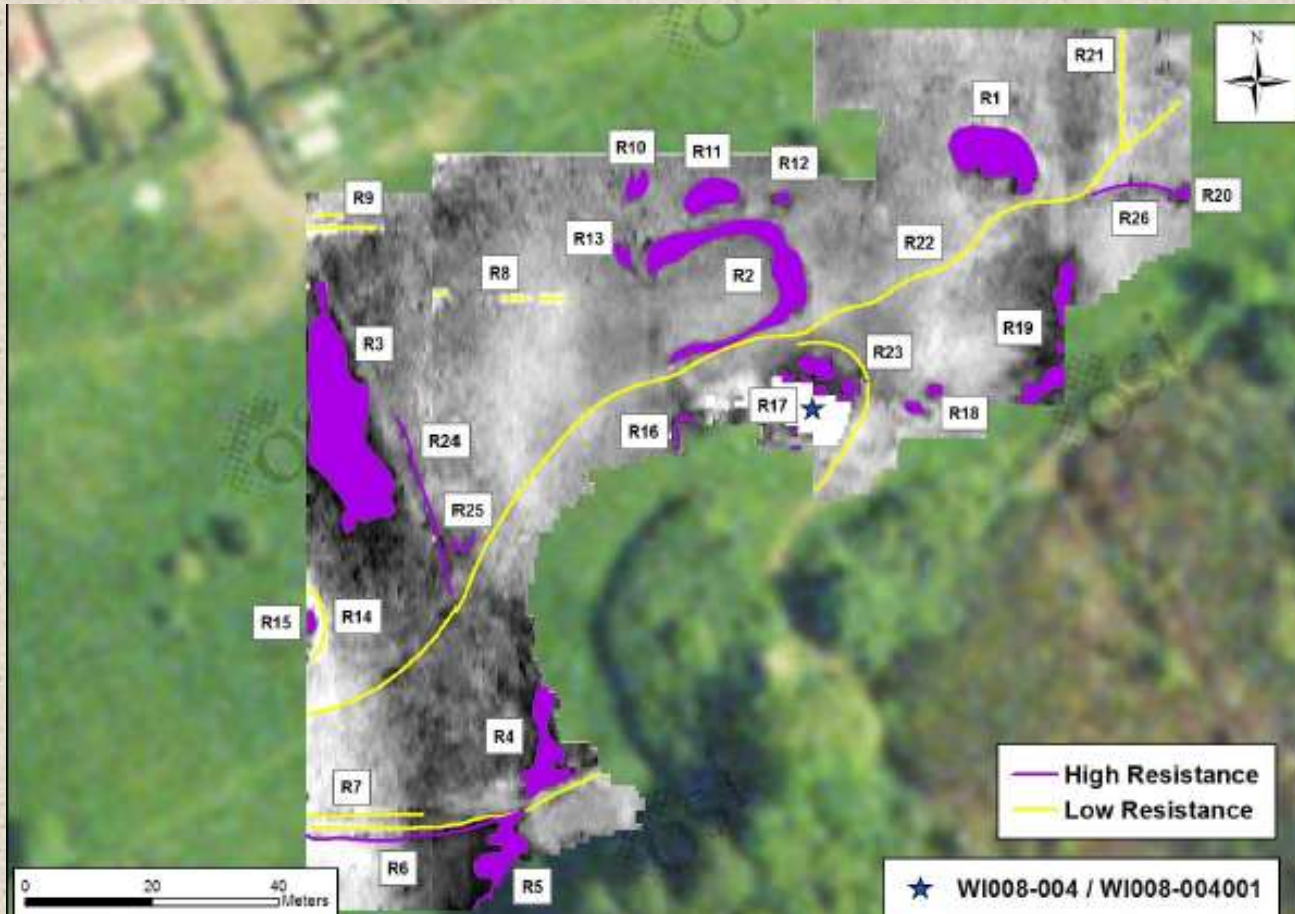


THE  
MEDIEVAL  
BRAY  
PROJECT

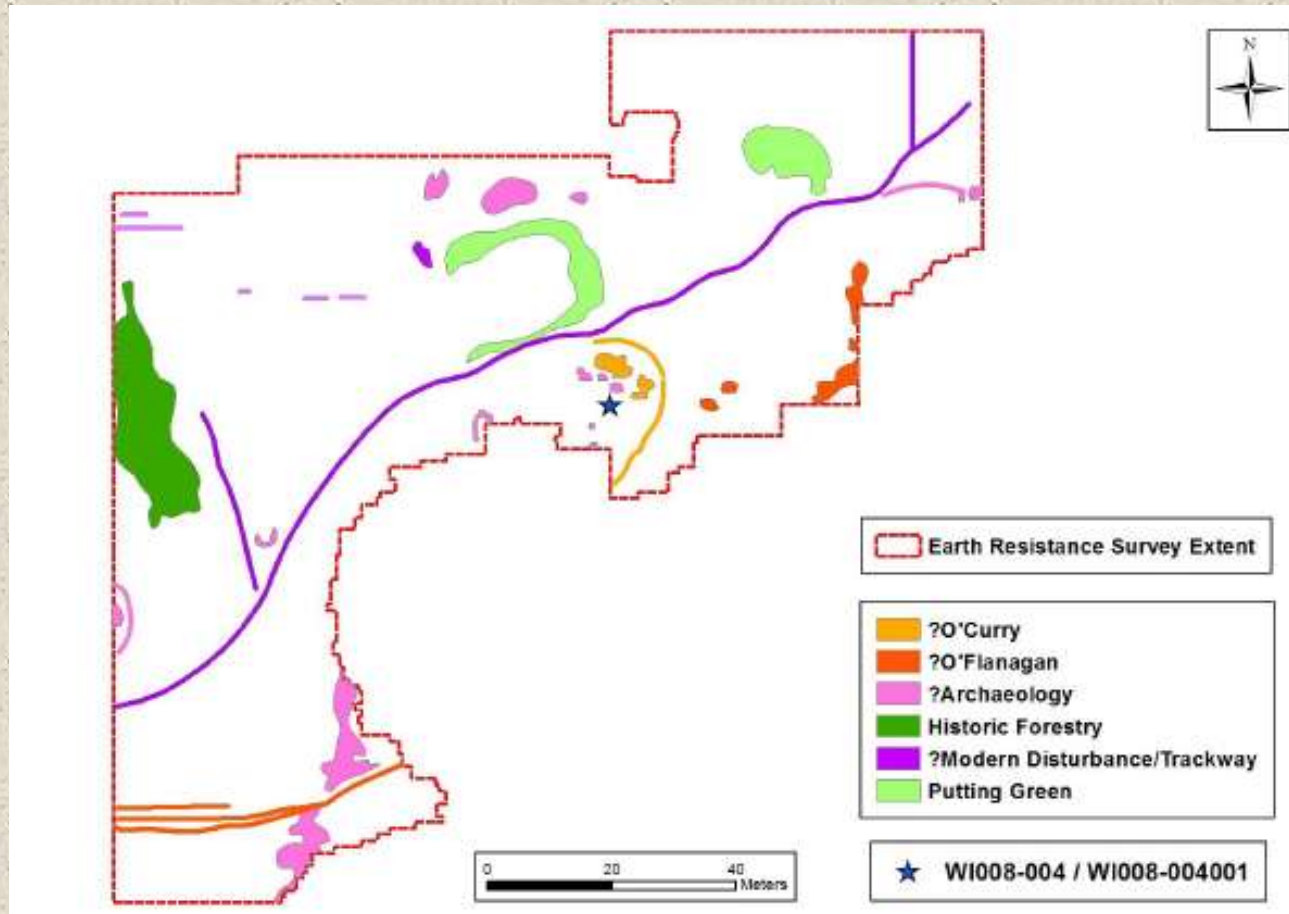
# THE RESEARCH AT RAHEEN A CLUIG



# THE RESEARCH AT RAHEEN A CLUIG



# THE RESEARCH AT RAHEEN A CLUIG



# THANKS!

The Brockagh Resource Centre, for facilitating this talk

Deirdre Burns, Heritage Officer with Wicklow County Council, who has been unstinting in her encouragement of the project

Wicklow County Council, in conjunction with the Heritage Council, as part of the Wicklow Heritage Plan for insurance and LIDAR cost contributions

Paul Duffy (Grassroots Archaeology/Resurrecting Monuments) for his support in the establishment of the group, and advice behind the scenes

The members of The Medieval Bray Project, especially the working group, who have freely given of their time, money and experience to get to this point



THE  
MEDIEVAL  
BRAY  
PROJECT